

PARTS

ANCHORS AND FITTINGS

- A. **PS-4019-BC** Brass socket anchor 4" . . . \$23.00
- PS-3019-B** Brass socket anchor 3" . . . \$16.15
- B. **STBR-5419** 4" square cup anchor (not shown) \$150.00
- C. **PH-82** Round cup anchor . . . \$44.50
- D1. **2400220** 1/2" eyebolt . . . \$38.50
- D2. **STBR-4863** 3/4" eyebolt . . . \$42.00
- D3. **STBR-4869** 5/8" eyebolt . . . \$44.00
- D4. **STBR-710** 3/8" eyebolt . . . \$28.75
- E. **A41494-0** Standard wedge dog . . . \$13.25
- F. **SPX392-BA** Hayward wedge dog . . . \$17.75
- G. **PW-3C** Small wedge dog (not shown) . . . \$4.15
- H. **PW-4C** Hanover bronze wedge dog . . . \$4.50
- I. **STBR-5035** C.P.B. deck flange . . . \$79.90
- J. **274** Male ladder bumper . . . \$2.90
- K. **WRB-101A** Female ladder bumper . . . \$4.45

ESCUTCHEONS

- L. **PE-0019-CPB** Chrome plated brass . . . \$14.95
- M. **PE-0019-S** Round stainless steel . . . \$5.70
- N. **EP-100A** Oval stainless steel . . . \$15.45
- O. **PE-0019-W** Round white Cylolac . . . \$1.95
- P. **PE-0019-C** Round chrome Cylolac . . . \$4.50

REPLACEMENT STEPS

- Q. **LTDF-103** Stainless steel w/hardware, 20" \$37.75
 - R. **44104** Cylolac, 19" sloping . . . \$54.00
 - 44101** Cylolac, 19" vertical . . . \$54.00
 - S. **A42077-0** Cylolac, 20" . . . \$32.15
 - 44109** Cylolac, 26" sloping . . . \$112.00
 - 44107** Cylolac, 26" vertical . . . \$112.00
- All above steps come with stainless steel bolts and nuts.
- T. **276** Stainless steel bolt and nut . . . \$3.95

RECESSED STEPS

- U. **62-209-4001** Cylolac recessed step not shown . . . \$43.50
- V. **67-209-911-SS** Stainless steel diving board kit . . . \$69.50
- W. **67-209-903-SS** Stainless steel 18" mounting kit . . . \$99.50
- X. **69-209-041** Slide hose kit Frontier II . . . \$49.50
- Y. **05-623** Slide or ladder flange . . . \$22.25
- Z. **LTDF-101** Residential plastic step w/hardware \$20.25
- AA. **6-300** End cap . . . \$11.10 each
- BB. **6-303L** End cap left . . . \$15.50 each
- CC. **6-303R** End cap right . . . \$15.50 each
- DD. **532-2017B** Water way step . . . \$41.35
- EE. **PF-2116-L** 1 3/8" flange above ground . . . \$9.00
- FF. **PF-2119-L** 1.9 Flange . . . \$9.00
- GG. **PF-3119** 1.9 Flange no hardware . . . \$10.20
- PF-3119-A** 1.9 Flange with anchors . . . \$19.95
- HH. **PC-4020-B** 4" Socket anchors w/20" centers . . . \$57.50
- PC-3020-B** 3" Socket anchors w/20" centers . . . \$43.50
- II. **PC-4008-BC** 4" Socket anchors w/8" centers . . . \$55.50
- JJ. **AS-100D** 6" Anchors for volleyball, basketball or slide . . . \$51.00



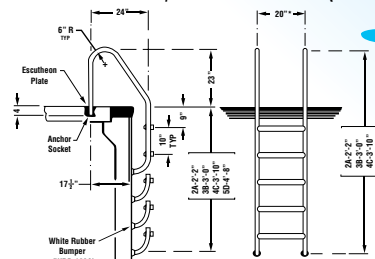
LADDERS

A. RESIDENTIAL LADDERS (24" wide) by Inter-Fab

Ladders with steps, stainless steel hardware & white rubber bumpers for private pool use. Stainless steel steps. Stainless steel (.049 thickness)



LADDERS HANDRAILS ACCESSORIES



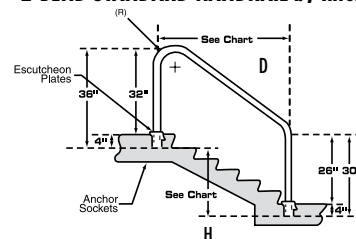
*19" on ladders with LTDF-101 tread.

- L2049S** 2 Step (A.S.), 25 lbs. . . . \$265.00
 - L3049S** 3 Step (A.S.), 28 lbs. . . . \$315.00
 - L4049S** 4 Step (A.S.), 34 lbs. . . . \$359.00
- Stainless steel (.065 thickness) (not shown)
- COML224065S** 2 Step (A.S.), 29 lbs. . . . \$474.50
 - COML324065S** 3 Step (A.S.), 38 lbs. . . . \$560.00
 - COML424065S** 4 Step (A.S.), 40 lbs. . . . \$636.00

Order anchor sockets and escutheons separately

HANDRAILS by Inter-Fab

2-BEND STANDARD HANDRAIL by Inter-Fab

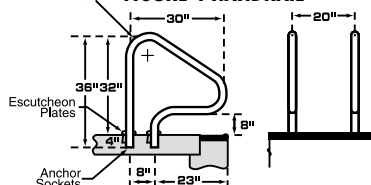


Model No.	Description	D	H	Price
D2S4049	4' 2-Bend (.049 Wall)	48"	26"	\$139.50
D2S4065	4' 2-Bend (.065 Wall)	48"	26"	\$216.00
D2S5049	5' 2-Bend (.049 Wall)	60"	36"	\$153.00
D2S5065	5' 2-Bend (.065 Wall)	60"	36"	\$234.00
D2S6049	6' 2-Bend (.049 Wall)	72"	46"	\$184.50
D2S6065	6' 2-Bend (.065 Wall)	72"	46"	\$263.00

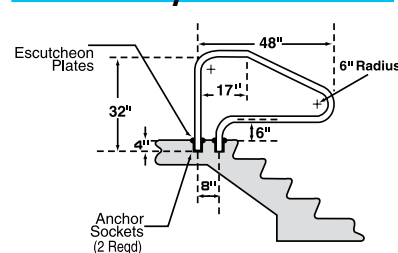
Handrails are made of 1.90" O.D. x .049" or .065" wall, 304 stainless steel tube with mirror finish. All bends are 6" radius. Custom dimension handrails are available on a Special Order basis. Customer to specify "A" or "B" dimensions. Horizontal and vertical cross braces are also available upon request.

Also available in .109" & .145" wall Order anchor sockets and escutheons separately.

FIGURE 4 HANDRAIL



STAIR RAIL by Inter-Fab



DECK-MOUNTED STAIR RAIL

D4D049 1.90" O.D. x .049 Stainless Steel . . . \$152.00

20" SAFETY-POOL STEP RETROFIT KIT

- Heavy-duty molded plastic
- Textured stepping surface for safety
- Available in 2, 3, 4, or 5 step kits
- Includes treads, protective side skirts and mounting hardware (US thread)
- Commercial kits also available – call factory for assistance



Part No	Description	Shipping Wt	Price
62-209-502R	2-Step Kit	10 lbs	\$156.00
62-209-503R	3-Step Kit	12 lbs	\$196.00
62-209-504R	4-Step Kit	18 lbs	\$241.00