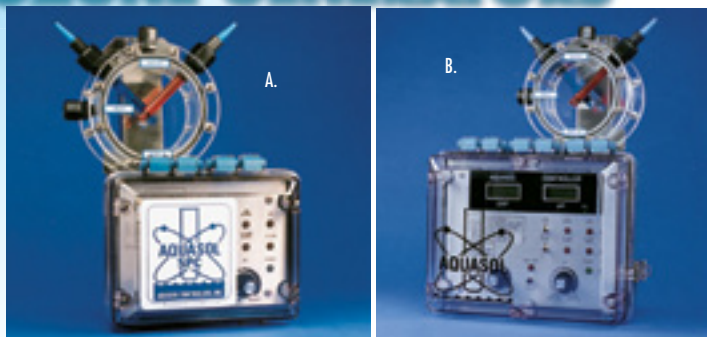


# AUTOMATIC CHEMICAL CONTROLLERS AND REPLACEMENT PROBES SLURRY FEEDER ACCESSORIES & OZONE GENERATORS



## AQUASOL CONTROLLERS

**A. THE AQUASOL LINE OF WATER CONTROLLERS** automatically maintains both the chlorine/bromine residual (using ORP technology) and pH in your pool or spa, continuously providing sanitary, clear water while eliminating tedious, manual water testing and treatment. Aquasol eliminates the problems associated with water chemistry control. By paying for themselves through chemical savings and reduced labor costs, the Aquasol controllers are an essential item to the operating budget of any commercial pool/spa operator.

### Advantages and Features:

- Saves on chemicals – up to 40% • Saves on labor of testing and correcting
- Eliminates odor and eyeburn complaints • Functional lifetime warranty on the circuit board
- Indicator lights show feed and alert status • Overfeed safety timer
- **Most importantly, Aquasols are serviceable by your staff saving you hundreds, even thousands of dollars in service fees charged by other controller companies.**

- Available in three models.
- A. #SPC Model SPC, basic controller . . . . . **\$1,875.00**
  - #SPCM Model SPCM (not shown) – All the features of our popular Model SPC with the addition of a single LCD digital meter that selectively gives ORP and pH readings **\$2,025.00**
  - B. #WTC Model WTC – Features digital meters for both ORP and pH display . . . . . **\$2,175.00**
  - #MO11-HP Safety Pressure Switch—Is recommended to interlock controller with system flow (not shown) . . . . . **\$191.00**

## REPLACEMENT PROBES FOR ALL MODELS OF CHEMICAL CONTROLLERS

**AQUA SOL PROBES**  
 S010 ORP probe \$124.00  
 S020 pH probe \$87.00

**STRANTROL PROBES**  
 S013 ORP probe \$172.00  
 S023 pH probe \$147.00

**ACU-TROL PROBES**  
 S014 ORP probe \$172.00  
 S024 pH probe \$147.00



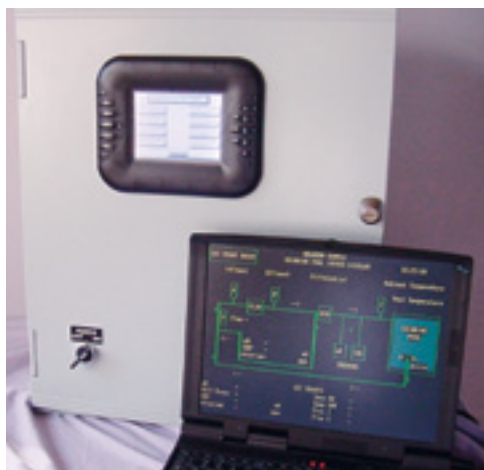
**HALOGEN/WATERMASTER PROBES**

S019 ORP Probe \$252.00  
 S029 pH Probe \$216.00

**M O R R P R O B E S**  
 S016 ORP Probe \$134.00  
 S026 pH probe \$116.00

**CHEMTROL PROBES**  
 S012 ORP probe \$114.00  
 S022 pH probe \$82.00

## WATERMASTER EMS POOL ENERGY MANAGEMENT SYSTEM CONTROLLER



State-of-the-art control of flowrate, pH & sanitizer levels, and water temperature. High quality touch-screen provides digital display of all eight control parameters. This unit functions as a digital flowmeter, water chemistry controller, and temperature control system ( $\pm 0.5^\circ F$ ). Internal modem router and communication software are standard. Complete package includes pH and ORP mixing chamber with probes, two (2) temperature sensors, two (2) pressure transducers, flow sensor w/pipe saddle, and a NEMA 4 cabinet. (Laptop computer not included)

### Features:

- Pump flowrate control • Flowmeter • Chemical controller; pH & ppm
  - Temperature control  $\pm 0.5$  deg. F • Mixed water hi-limit shutoff • Differential pressure.
- Weight 50 lbs. Power requirement 120 V 15 Amp.

**EXCLUSIVELY FROM HALOGEN** – When our adjustable frequency drive (VFD) package is added, the WaterMaster EMS can control your circulation pump speed, for thousands of dollars of yearly energy savings. Talk to one of our technical advisors for more information on the advantages of this time-proven approach to reduction of operating costs.

- #1608WM WaterMaster EMS System . . . . . **Price on Request**
- #VLT 6000 Adjustable Frequency Drive . . . . . **Price on Request**

## CLEARWATER TECH OZONE GENERATORS



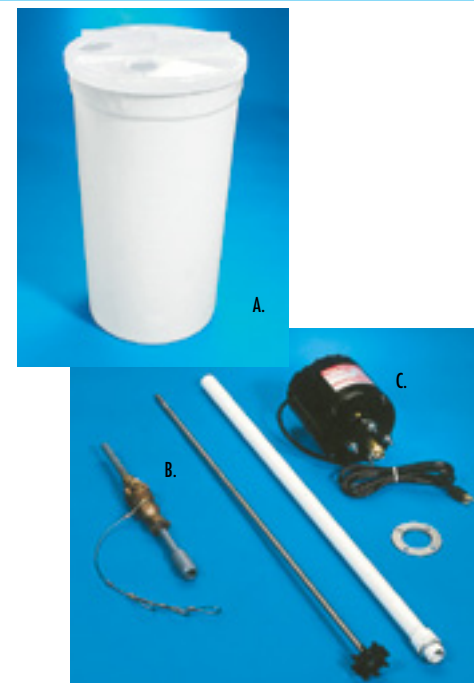
Shown: POE 15

Shown: CD-6000

Ozone is a powerful oxidizer. It has been used in waste water treatment, aquariums and large volume water stores, as well as swimming pool and spa applications. It oxidizes contaminants to improve water quality as well as air quality on indoor applications.

Clearwater Tech has been manufacturing superior ozone generators since 1986. Let Halogen assist you in learning more about ozone for your pool and spa use and choosing a system that is right for you.

Call Toll Free 1-800-777-SWIM.



## SLURRY FEEDER ACCESSORIES

- A. POLYETHYLENE TANKS**  
 Used in slurry feeding of liquid or granular chlorine, soda ash or sodium bisulfate.
- 8613 30 gal. polyethylene tank only . . . . . **\$126.00**
  - 8617 Cover only for 30 gal. tank . . . . . **\$53.00**
  - 8614 55 gal. polyethylene tank only . . . . . **\$140.00**
  - 8625 Cover only for 55 gal. tank . . . . . **\$53.00**
  - 113 100 gallon polyethylene tank with cover . . . . . **\$505.00**
- Note: 150 & 200 gallon poly tanks available P.O.A.**
- B. CORPORATION STOP**  
 Corporation Stop can be used to extend injection point and removal of injection check valve in a line without interruption of main line.
- #J61135 3/4" Corporation Stop . . . . . **\$210.00**
- C. AGITATORS By Wingert**
- #F20A/WRD Flange Mount—1/2 H.P. motor provided with steel flange and four plated bolts for mounting the mixer directly over the shaft hole in the tank cover or other flat surface. Electric cord included . . . . . **\$522.00**
  - #C20A/WRD Clamp Mount—Same as above except for mounting on tank side . . . . . **\$707.00**
  - #177 Tilt Plate—Prevent agitator shaft from damaging side of tank . . . . . **\$20.25**
  - #178 Tube Shield—Prevents tubing from getting wrapped around agitator shaft . . . . . **\$20.25**
  - #0315 Shaft—Stainless Steel . . . . . **\$58.80**
  - #0264 Propeller—Neoprene . . . . . **\$169.40**
  - #0253 Brass Shaft Coupler . . . . . **\$64.40**